

## Chinese Medicine health practitioner registrant data: June 2015

---

Published August 2015

### Introduction

The functions of the Chinese Medicine Board of Australia (the Board) include:

- registering the Chinese medicine practitioners and students
- developing standards, codes and guidelines for the Chinese Medicine profession
- handling notifications, complaints, investigations and disciplinary hearings
- overseeing the assessment of overseas trained practitioners who wish to practise in Australia, and
- approving accreditation standards and accredited courses of study.

The Board's functions are supported by the [Australian Health Practitioner Regulation Agency](http://www.ahpra.gov.au) (AHPRA). For information about legislation governing our operations see AHPRA's Legislation & Publications at [www.ahpra.gov.au/Publications](http://www.ahpra.gov.au/Publications)

The Board has analysed its registration data and produced a number of statistical breakdowns about registrants to share with the profession and community. The Board shares these breakdowns regularly.

For more information on Chinese Medicine registration, please see the Board's website [www.chinesemedicineboard.gov.au/Registration.aspx](http://www.chinesemedicineboard.gov.au/Registration.aspx)

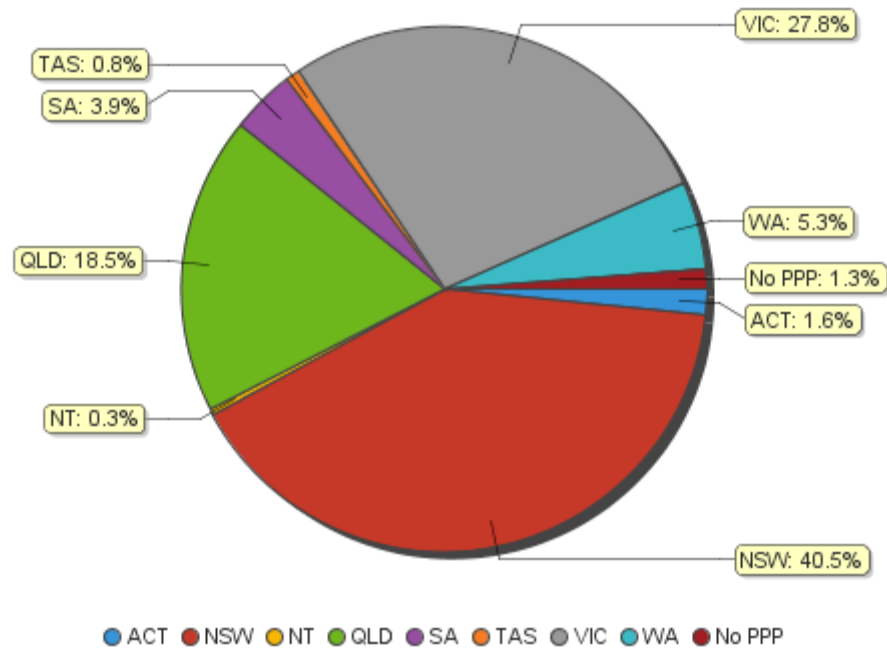
## Contents

Chinese Medicine health practitioners – registration type by state or territory .....	3
Chinese Medicine health practitioners – percentage by principal place of practice.....	3
Chinese Medicine health practitioners – division(s) by state or territory .....	4
Chinese Medicine health practitioners – registration type by age group.....	5
Chinese Medicine health practitioners – by age group .....	6
Chinese Medicine health practitioners – registration type by gender.....	7
Chinese Medicine health practitioners – percentage by gender .....	7

Chinese Medicine health practitioners – registration type by state or territory

Chinese Medicine Practitioner Registration type	Principal place of practice									Total
	ACT	NSW	NT	QLD	SA	TAS	VIC	WA	No PPP	
General	70	1,783	14	795	174	36	1,182	234	27	4,315
Non-practising	1	37		35	2	1	68	4	31	179
<b>Total</b>	71	1,820	14	830	176	37	1,250	238	58	4,494

Chinese Medicine health practitioners – percentage by principal place of practice



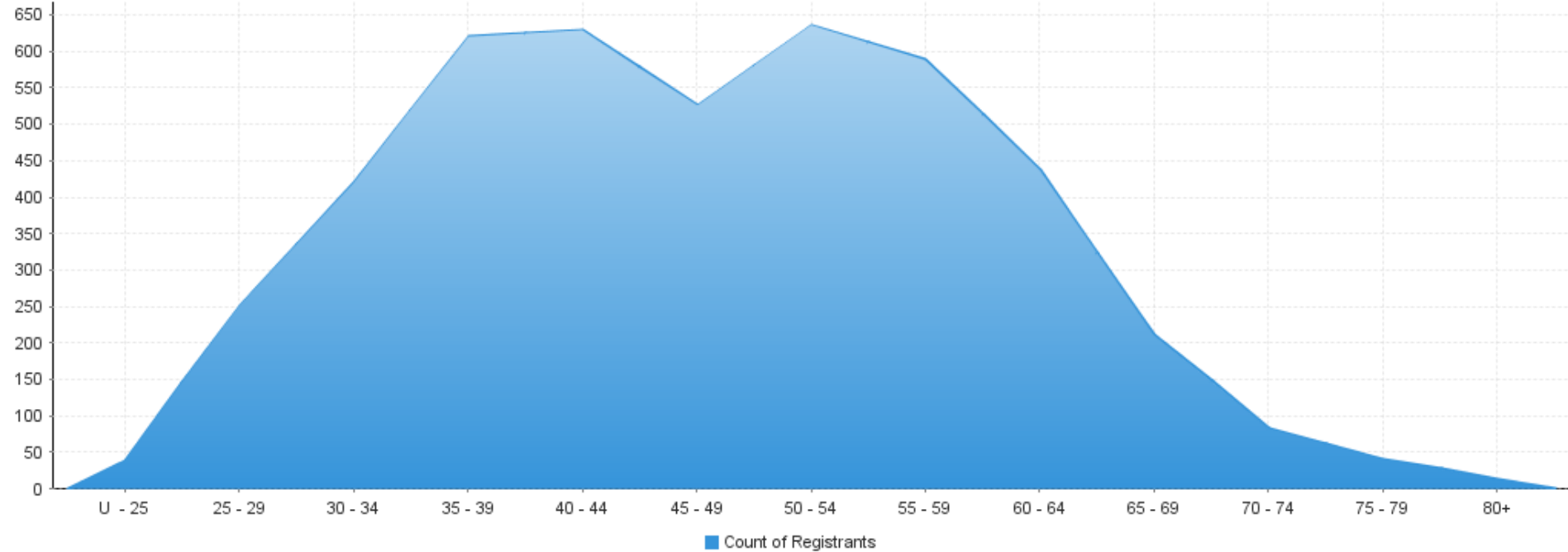
### Chinese Medicine health practitioners – division(s) by state or territory

Chinese Medicine health practitioners		Principal place of practice								Total
Divisions	ACT	NSW	NT	QLD	SA	TAS	VIC	WA	No PPP	
Acupuncturist	27	426	10	560	102	24	433	97	9	1,688
Acupuncturist and Chinese Herbal Dispenser				2						2
Acupuncturist and Chinese Herbal Dispenser and Chinese Herbal Medicine Practitioner	8	415		43	9	2	122	27	5	631
Acupuncturist and Chinese Herbal Medicine Practitioner	36	919	4	217	62	11	667	112	40	2,068
Chinese Herbal Dispenser		34		1	1		3	2		41
Chinese Herbal Dispenser and Chinese Herbal Medicine Practitioner		10			2		1		1	14
Chinese Herbal Medicine Practitioner		16		7			24		3	50
<b>Total</b>	71	1,820	14	830	176	37	1,250	238	58	4,494

Chinese Medicine health practitioners – registration type by age group

Chinese Medicine health practitioners		Registration type		Total
Age group	General	Non-practising		
U - 25	38	1		39
25 - 29	245	7		252
30 - 34	392	27		419
35 - 39	591	29		620
40 - 44	606	23		629
45 - 49	512	14		526
50 - 54	615	21		636
55 - 59	565	23		588
60 - 64	421	16		437
65 - 69	199	12		211
70 - 74	81	2		83
75 - 79	38	3		41
80+	12	1		13
<b>Total</b>	<b>4,315</b>	<b>179</b>		<b>4,494</b>

**Chinese Medicine health practitioners – by age group**



Age Group	U - 25	25 - 29	30 - 34	35 - 39	40 - 44	45 - 49	50 - 54	55 - 59	60 - 64	65 - 69	70 - 74	75 - 79	80+
Count of Registrants	39	252	419	620	629	526	636	588	437	211	83	41	13

### Chinese Medicine health practitioners – registration type by gender

Chinese Medicine health practitioners		Principal place of practice									Total
Gender	Registration type	ACT	NSW	NT	QLD	SA	TAS	VIC	WA	No PPP	
Female	General	37	939	7	411	92	22	645	140	12	2,305
	Non-practising	1	22		26	1	1	44	3	12	110
Sub Total		38	961	7	437	93	23	689	143	24	2,415
Male	General	33	844	7	384	82	14	537	94	15	2,010
	Non-practising		15		9	1		24	1	19	69
Sub Total		33	859	7	393	83	14	561	95	34	2,079
<b>Total</b>		71	1,820	14	830	176	37	1,250	238	58	4,494

### Chinese Medicine health practitioners – percentage by gender

Chinese Medicine health practitioners		Principal place of practice									Total
Gender		ACT	NSW	NT	QLD	SA	TAS	VIC	WA	No PPP	
Female		53.52%	52.80%	50.00%	52.65%	52.84%	62.16%	55.12%	60.08%	41.38%	53.74%
Male		46.48%	47.20%	50.00%	47.35%	47.16%	37.84%	44.88%	39.92%	58.62%	46.26%